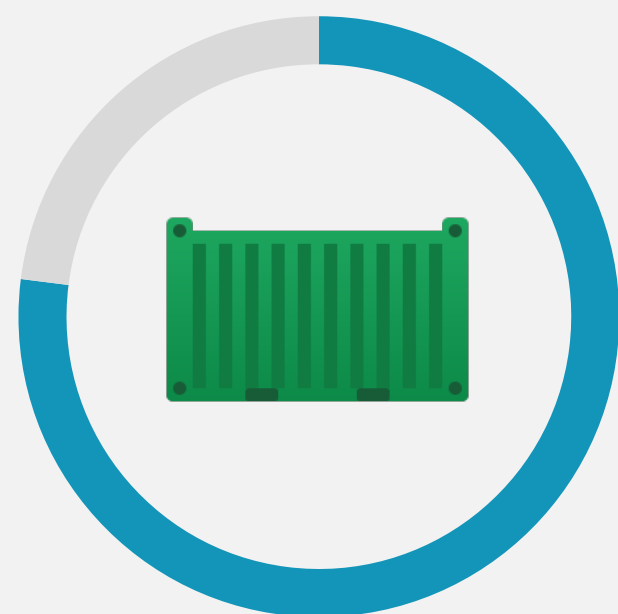


## To Succeed With K8s and Hybrid Clouds, You Need an Enterprise-grade Service Mesh

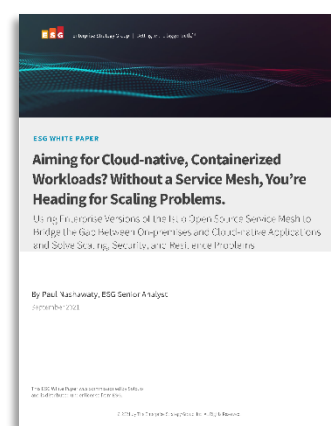


**77%**  
of respondents are running  
production applications in  
containers now



**21%**  
are planning to do  
so within the next  
twelve months.

Source: ESG Research Report: *The Maturation of Cloud-native Security*, May 2021.



SOURCE:

### **Aiming for Cloud-native, Containerized Workloads? Without a Service Mesh, You're Heading for Scaling Problems.**

Using Enterprise Versions of the Istio Open Source Service Mesh to Bridge the Gap Between On-premises and Cloud-native Applications and Solve Scaling, Security, and Resilience Problems

This InstaGraphic highlights results from an ESG White Paper commissioned by:



## WHY THIS MATTERS

With the adoption of containers and the cloud, applications are now distributed into microservices running everywhere.

This means enterprises will need a secure, reliable, observable, and easy-to-manage service mesh to connect their modern applications, as legacy solutions aren't good enough.

ESG suggests considering an enhanced Istio service mesh as a smart choice.

[LEARN MORE](#)